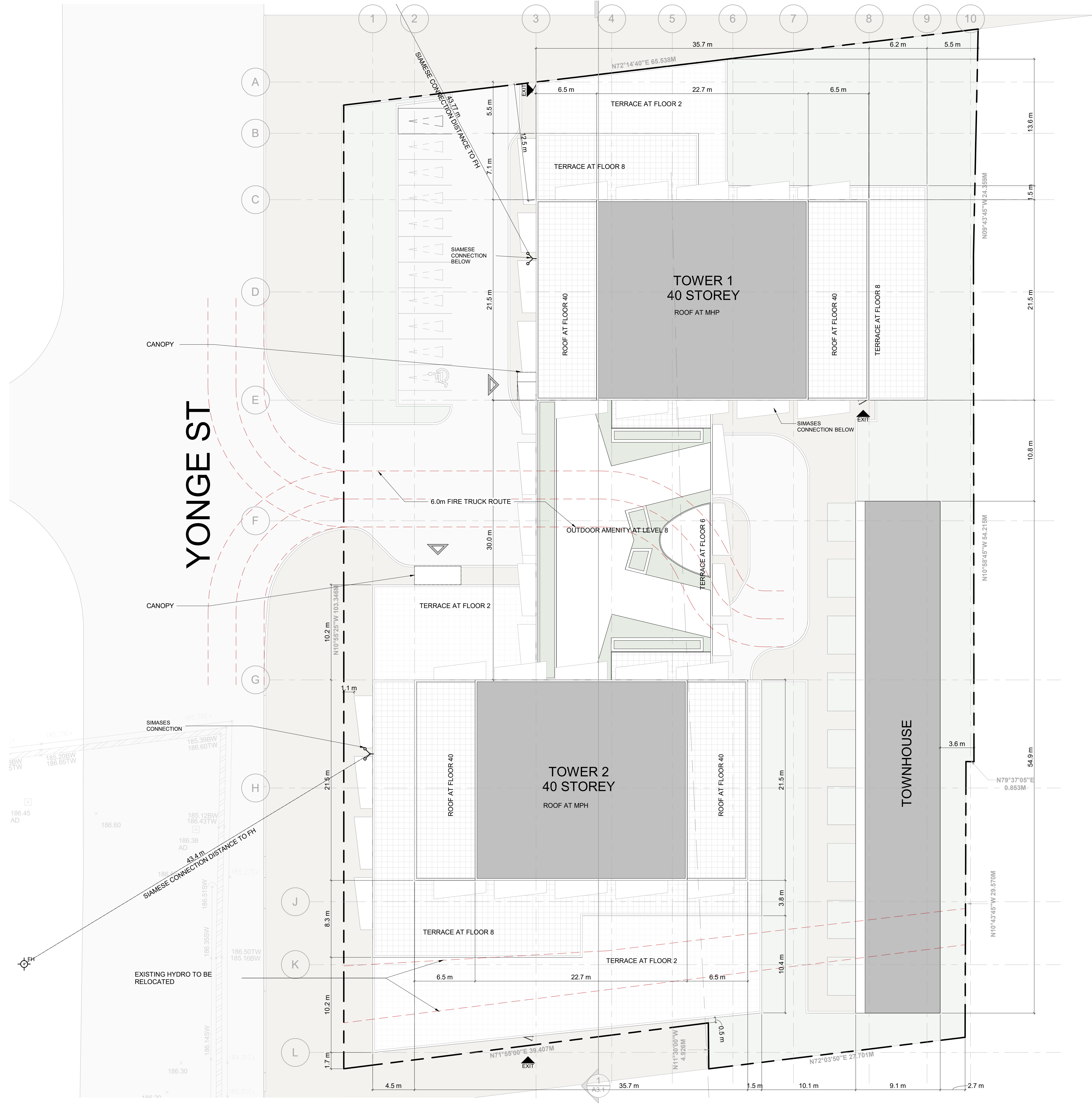


2022-08-03 5:55:31 PM



TURNER FLEISCHER
 Turner Fleischer Architects Inc.
 67 Lesmill Road
 Toronto, ON, M3B 2T8
 T 416 425 2222
 turnerfleischer.com

This drawing, as an instrument of service, is provided by and is the property of Turner Fleischer Architects Inc. The contractor must verify and accept responsibility for all dimensions and conditions on site and that only Turner Fleischer Architects Inc. is responsible for the accuracy of the information. This drawing is not to be used for any other purpose than the intended use. The architect is not responsible for the accuracy of survey, structural, mechanical, electrical, etc. information shown on this drawing. Refer to the appropriate consultant's drawings before proceeding with the work. Construction must conform to all applicable codes and requirements of authorities having jurisdiction. The contractor working from drawings not specifically marked for construction must assume full responsibility and bear costs for any corrections or damages resulting from his work.

LEGEND

- PRIMARY RESIDENTIAL ENTRANCE
- SECONDARY RESIDENTIAL ENTRANCE
- RETAIL ENTRANCE
- EXIT
- FIRE HYDRANT
- SIAMESE CONNECTION
- CONVEX MIRROR
- TRANSFORMER WITH CLEARANCES
- FIRE ROUTE SIGN
- 0.000.00 SPOT ELEVATION
- GAS/HYDRO METER

#	DATE	ISSUED FOR RZ/OFA	DESCRIPTION	BY
A	July 29, 2022	Issued for RZ/OFA		

PROJECT
PROPOSED CONDOMINIUM 8127-8149
 Yonge Street
 Markham, ON

DRAWING
Roof-Plan/Site-Plan

PROJECT NO. 21-158P01	
DRAWN BY HHK	
CHECKED BY RMM	
SCALE As indicated	

DRAWING NO. A1.0	REV. A
----------------------------	------------------